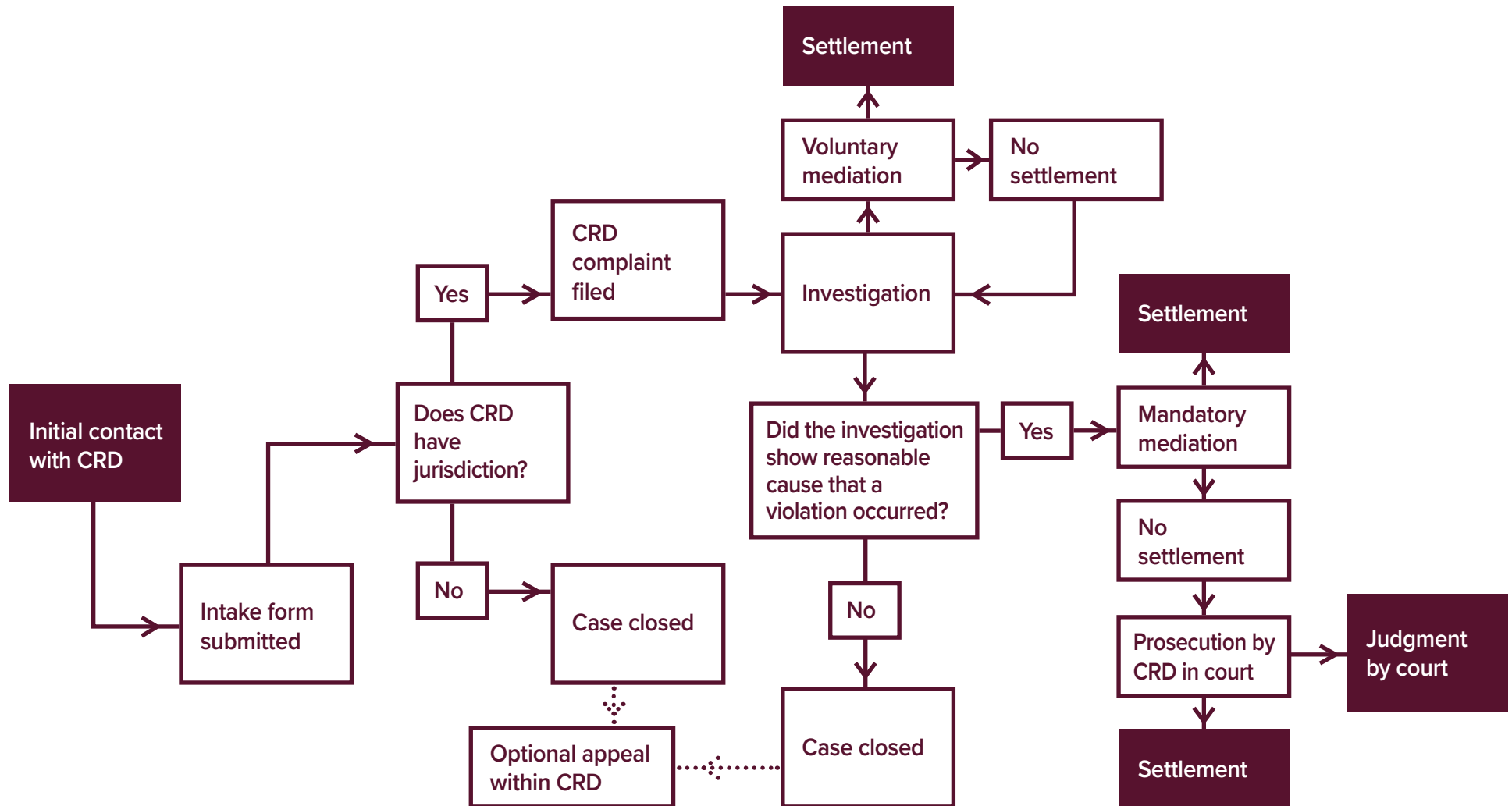




# Complaint Flowchart (Non-Employment\*)



\*Applies to the following complaint types: housing, business establishment (Unruh Act), Disabled Persons Act, bias-motivated violence (Ralph Act), human trafficking, and state-funded programs/activities.  
 This guidance is for informational purposes only, does not establish substantive policy or rights, and does not constitute legal advice.