

CALIFORNIA VS HATE 2025 FACT SHEET



California vs Hate is the state's first-ever multilingual statewide hotline and online portal that provides a safe, anonymous reporting option for victims and witnesses of hate. **The data below reflects reports of hate made to the hotline in 2025, including both hate crimes and incidents.** This data is based on self-reported information from people who have experienced an act of hate and should not be treated as representative of all acts of hate in California. Learn more about the program and what counts as an act of hate by going to CAvsHate.org.

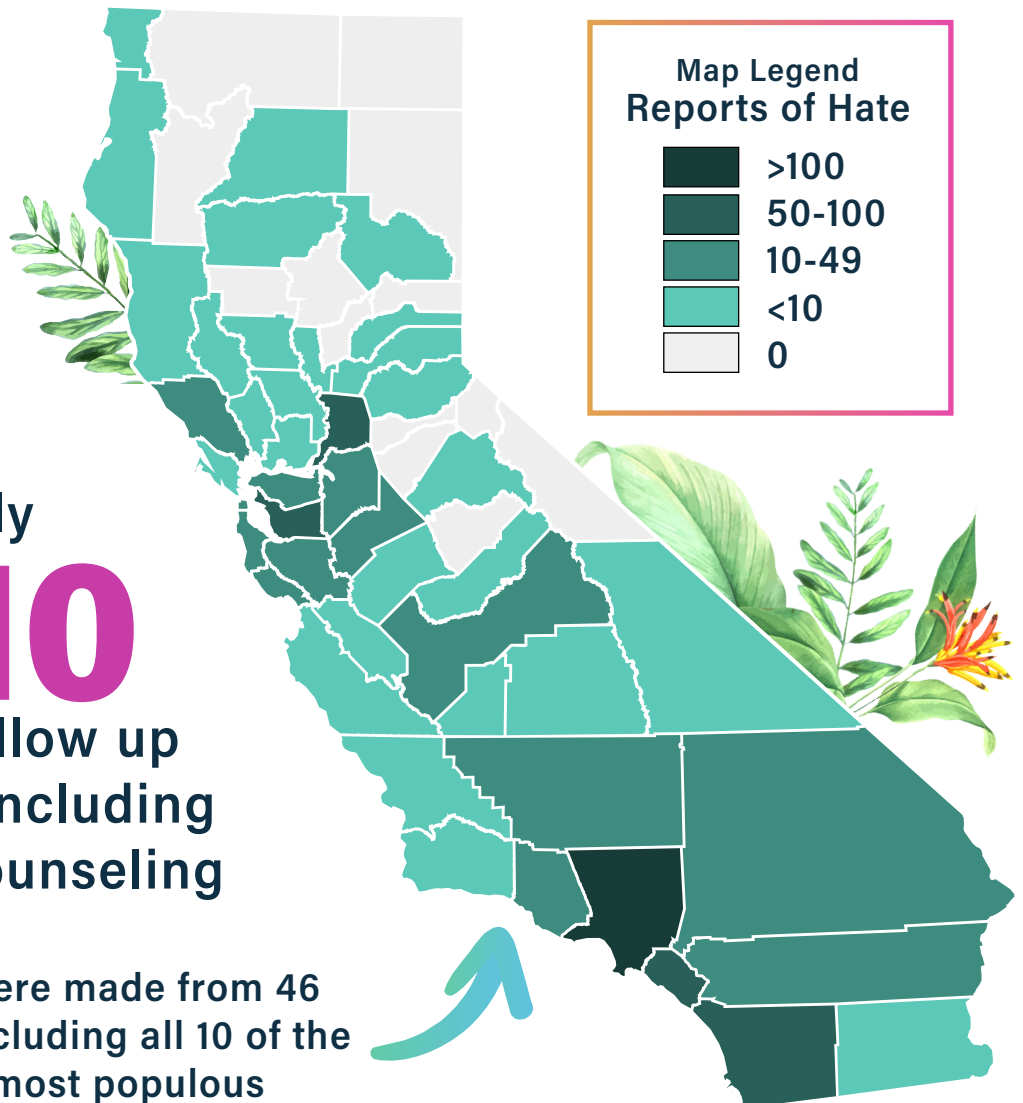


The hotline has responded to more than **6,800** requests for help, including non-hate acts, since launching in May 2023.

992
reports of hate

Roughly
7 out of 10
agreed to follow up
for services, including
legal aid or counseling

Reports were made from 46
counties, including all 10 of the
state's most populous



| Most Common Bias Motivations | Count | Percent of Total Reports of Hate* |
|---|-------|-----------------------------------|
| Race or Ethnicity | 470 | 47% |
| Gender Identity, Sex, or Sexual Orientation | 190 | 19% |
| Religion | 175 | 18% |
| Disability Status | 89 | 9% |
| Immigration or Citizenship Status | 67 | 7% |

| Most Common Location Types | Count | Percent of Total Reports of Hate |
|---------------------------------|-------|----------------------------------|
| Residential | 360 | 36% |
| Public Facilities or Businesses | 161 | 16% |
| Work | 93 | 9% |

| Most Common Incident Types | Count | Percent of Total Reports of Hate* |
|---------------------------------------|-------|-----------------------------------|
| Verbal Harassment or Derogatory Slurs | 688 | 68% |
| Discriminatory Treatment | 486 | 48% |
| Intimidation or Threats of Violence | 402 | 40% |

*Please note that people who report to CA vs Hate can skip a question or report more than one bias motivation or incident type. As a result, the total percentages do not always sum to 100%.



California vs Hate is a non-emergency, multilingual hate crime and incident reporting system to support individuals and communities targeted for hate. CA vs Hate is committed to making California a more safe and inclusive place for all. The hotline uses a trauma-informed, victim-centered approach to help connect people who report with the resources that they request in their communities **Any victim of or witness to a hate crime or incident in California can report and receive support at any time at CAVsHate.org. You can also call 833-866-4283 or 833-8-NO-HATE, Monday to Friday from 9:00 AM to 6:00 PM.** Individuals who are in imminent danger are encouraged to call 911.